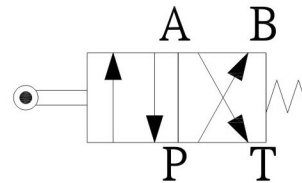


Cam Operated Directional Valves



JIS Graphic Symbol



Feature

These valves may be used to shift the direction of oil flow by depressing the spool by a simple cam design.

Model Definition

DC	G	-02	NC
Model Series	Installation Type	Valve Size(inch)	Spool Type
Cam Operated Directional Valve	G : Sub-plate Mounting T : Threaded Connection	02 : 1/4"	NO: Normally Open NC: Normally Closed

Specification

Model		Max. Flow (ℓ/min)	Max. Operating Pressure (MPa)	Max Back Pressure (MPa)	Weight (kg)
Sub-plate Mounting	DCG-02	45	25	7	1.5
Threaded Connection	DCT-02				1.4

Dimension

DCG-02

DCG-02 : ISO 4401-AB-03-4-A

