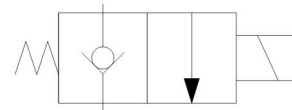


Solenoid Operated Poppet Type Two-Way Valves



JIS Graphic Symbol



Model Definition

V2066	-A22	-OM
Model Series	Coil Type	Manual Operating
Solenoid Operated Poppet Type Two-Way Valve	D12 : DC12V D24 : DC24V A24 : AC24V A11 : AC110V A22 : AC220V A38 : AC380V	Omit: Not Required OM: With Manual Operation

Specification

Model	Normally Closed		Normally Open		Max. Flow (l/min)	Weight (Kg)	Max. Operating Pressure (MPa)	Operating Temperature (°C)
	One-way	Two-way	One-way	Two-way				
V2066	•	•	-	-	20	0.2	21	-20~120
V2067	•	•	•	•		0.5		
V2068	•	•	-	-		0.5		
V3066	•	•	•	•	40	0.4		
V3067	•	•	-	-		0.7		
V3068	•	•	-	-		0.5		
V6067	•	•	-	-	80	1.6		
V6068	•	•	-	-		0.8		