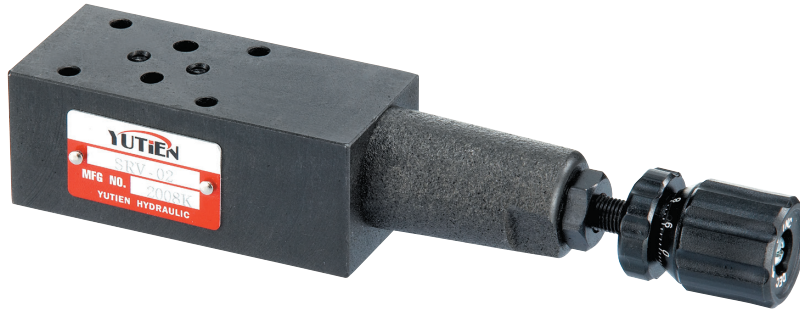
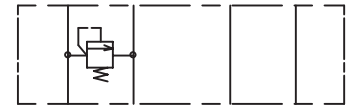


Modular Relief Valves



JIS-Graphic Symbol



Model Description

| SRV | D | -02 | P | 3 |
|-----------------------|--|---|--|---|
| Model /Series | Control Type | Thread Code Size (Inch) | Control Port | Pressure Adjustment Range/ Kg/cm ² |
| Modular Relief Valves | None: Normal Type D: Remote Control | 01 : 1/8" 02 : 1/4" 03 : 3/8" 04 : 1/2" 06 : 3/4" | A: A Port B: B Port P: P Port W: A&B Port | 1 : 7-70 2 : 35-140 3 : 140-210 |

Specification

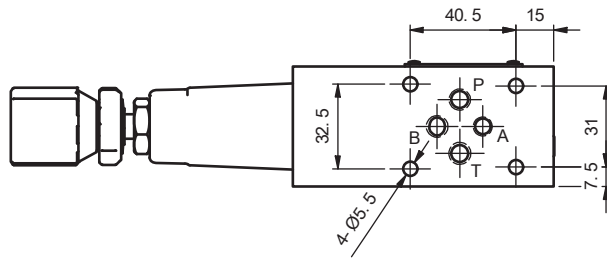
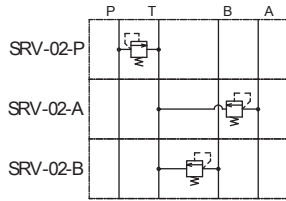
| Model /Type | Operation Pressure (Max.) Kg/cm ² | Rated Flow (Max.) L/min |
|-------------|--|-------------------------|
| SRV-02 | 250 | 40 |
| SRV-03 | | 80 |
| SRV-04 | | 160 |
| SRV-06 | | 200 |

Dimensions

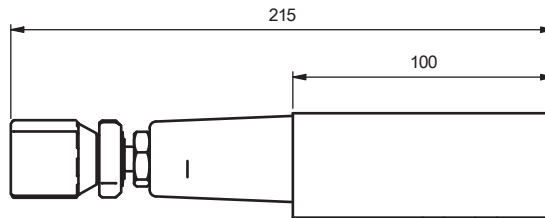
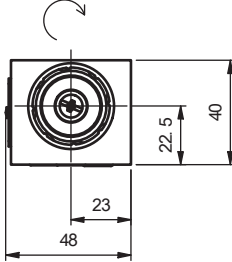
SRV-02A/B/P

ISO 4401-AB-03-4-A

Hydraulic Symbol



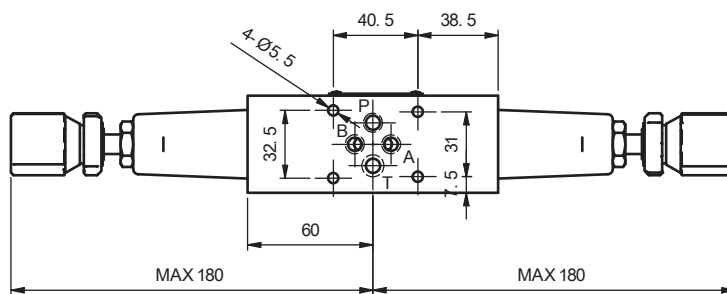
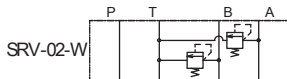
Adjustment way
Increase



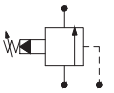
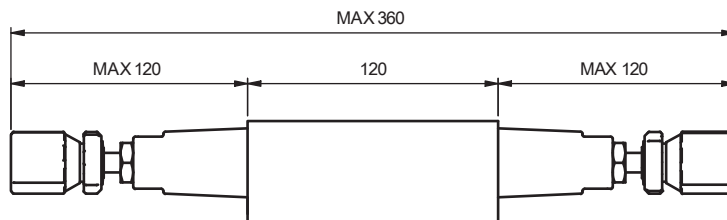
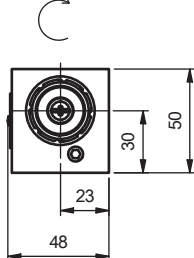
SRV-02W

ISO 4401-AB-03-4-A

Hydraulic Symbol



Adjustment way
Increase

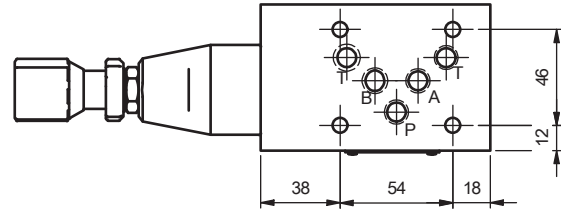
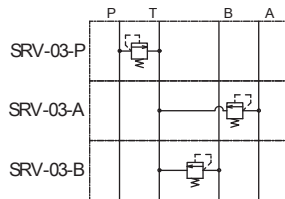


Modular Valves
Modular Relief Valves

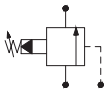
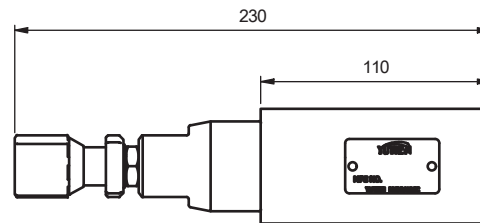
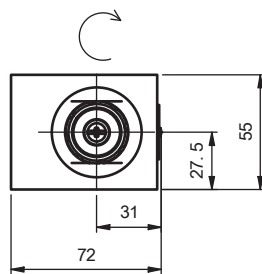
Dimensions

SRV-03A/B/P
ISO 4401-AC-05-4-A

Hydraulic Symbol



Adjustment way
Increase



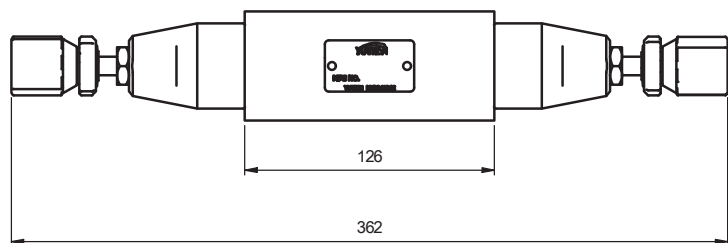
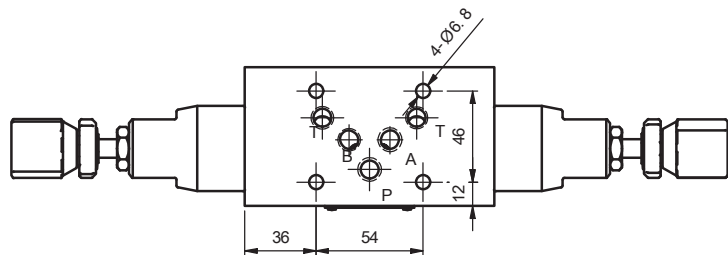
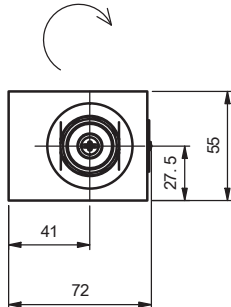
SRV-03W

ISO 4401-AC-05-4-A

Hydraulic Symbol

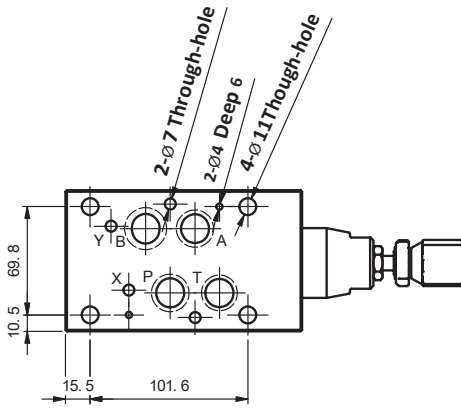


Adjustment way
Increase

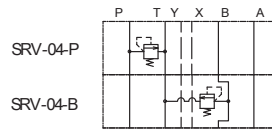


Dimensions

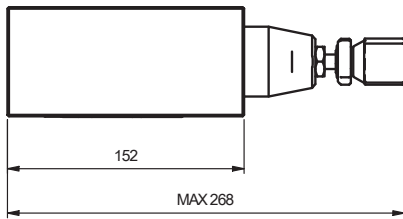
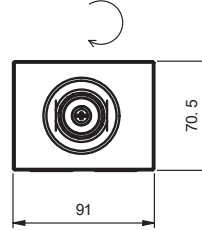
SRV-04
ISO 4401-AD-07-4-A



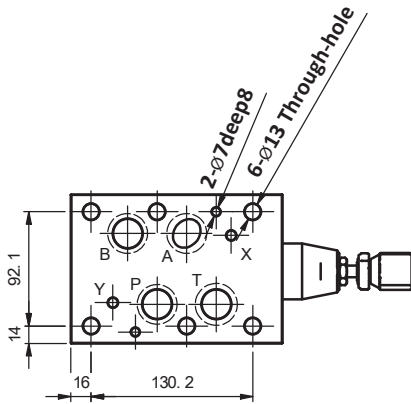
Hydraulic Symbol



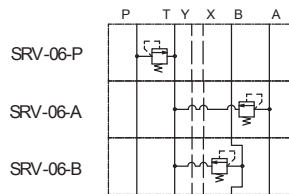
Adjustment way Increase



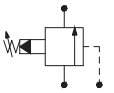
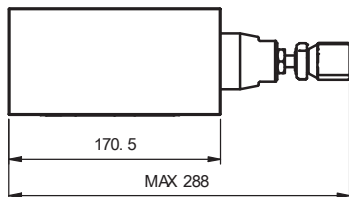
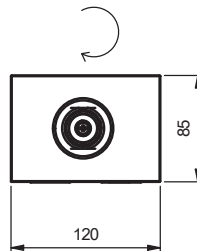
SRV-06
ISO 4401-AE-08-4-A



Hydraulic Symbol



Adjustment way Increase



Modular Valves
Modular Relief Valves